

## Windsor Thames Street

59-60 Thames St, Windsor, SL4 1TX

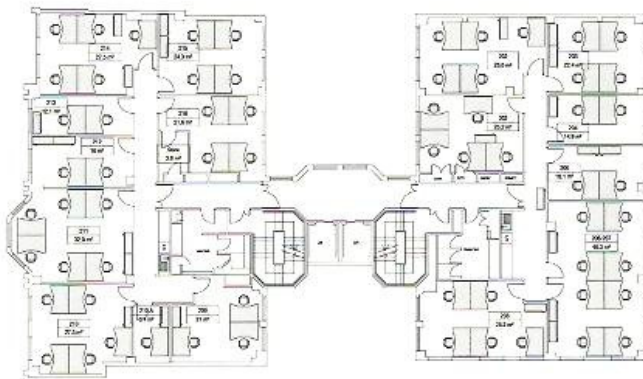
Restored Georgian residence with castle views

100 - 13600 sq ft units available

# Windsor Thames Street

59-60 Thames St, Windsor, SL4 1TX  
100 - 13600 sq ft units available

This centre is positioned in a recently redeveloped Georgian residence which has been sympathetically converted and retains a sense of warmth and history. Some of the offices have balconies overlooking a picturesque section of the River Thames and Eton Bridge and there are fantastic views of Windsor and the castle from the other side of the building. A central atrium fills the communal area with plenty of light and gives a relaxed open feel to the ground floor. The business lounge situated at the front of the building benefits from a full floor-to-ceiling window and fantastic views of the town centre. The centre is located just a few steps from the entrance with a pedestrian bridge over the river giving access to Eton and its many amenities. Windsor is in the Thames Valley, one of the wealthiest regions in the European Union, often referred to as the 'engine room of the UK economy'.

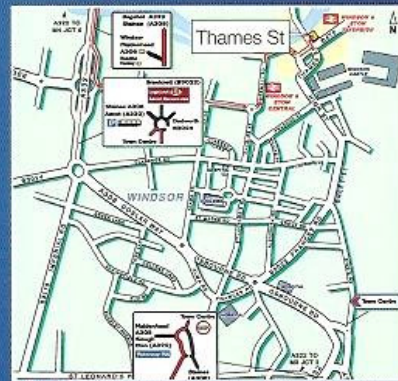


## Specification

- 24 hour access
- 24 hour CCTV monitoring
- Meeting Rooms
- Business Lounge
- Disabled facilities
- Elevator
- Break-Out Areas
- Temp control
- High speed internet

## From the M4

- Leave M4 at Junction 6 and follow signs for A332 Windsor.
- As you go down the dual carriageway take the first exit off to your left signposted (Windsor Castle)
- Go down the slip road to the roundabout and take the first exit left into Maidenhead Road
- Keep going straight ahead through 3 sets of traffic lights past the Shell Garage AA Clark on your right, into Arthur Road and continue until reaching a roundabout
- Take the first exit left into Goswell Road signposted Datchet B470
- Go under the Railway Arches and bear right at the end of this road with the River Thames on your left
- Shortly after this corner on your right is a restaurant called Browns
- Following this road, pass through a set of pedestrian traffic lights and then following the road around bear left onto Thames Avenue
- At next set of traffic lights, turn left onto Thames Street
- Gainsborough House is the third building on your right

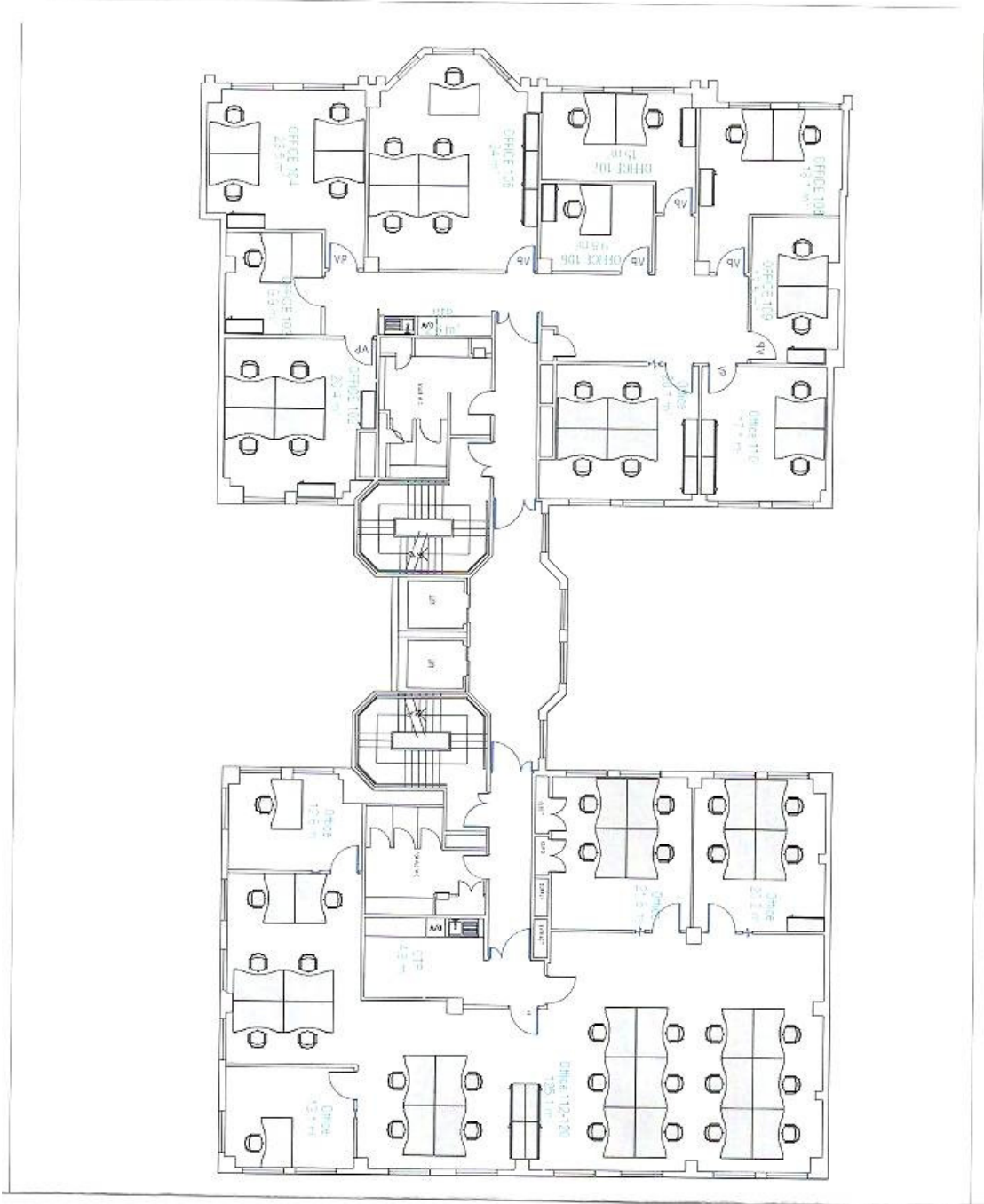


## Terms

Offices are available on flexible terms from 3 months to 5 years or more.  
Suites from 100 - 13600 sq ft available.

## Important

These particulars do not form part of any contract. None of the directors, employees or agents are authorised to give or make any warranty or representation on behalf of any party. Whilst information and particulars are given in good faith, intending purchasers or tenants must satisfy themselves independently as to the accuracy of all matters on which they intend to rely. All negotiations are subject to contract.



**Windsor Thames Street, Floor Plan**