

Slough Town Centre

18 Stoke Road, Slough, SL2 5AG

Prominent office building in boom town

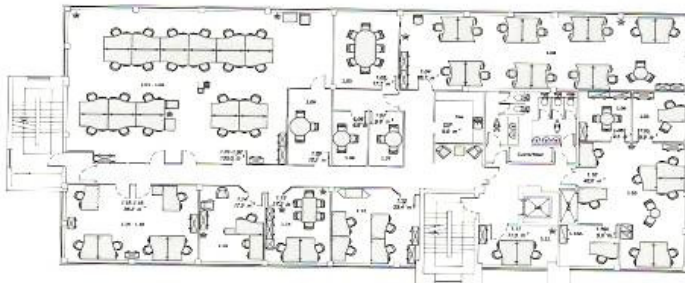
250 - 18697 sq ft units available

Slough Town Centre

18 Stoke Road, Slough, SL2 5AG

250 - 18697 sq ft units available

This centre is in a prominent office building in the middle of Slough next to the station. There are many reasons for locating a business here. Slough was once called 'Britain's Boomtown, by a national newspaper and provides an affordable entrance to the prestigious Thames Valley area. It is also a town with a thriving £2.5 billion economy and ambitious, confident plans for the future. One of the top three most productive towns in the UK outside London, it contributes around £8 billion to the national economy; double the UK average. 4,600 organisations are based here, including some of the best known names in business, across sectors such as retail, the motor industry, telecommunications and confectionery. It also has the highest concentration of European headquarters in the UK. This is a competitive and dynamic business environment with a high-quality supply chain, excellent accessibility and transport links and a plentiful supply of skilled talent.



Specification

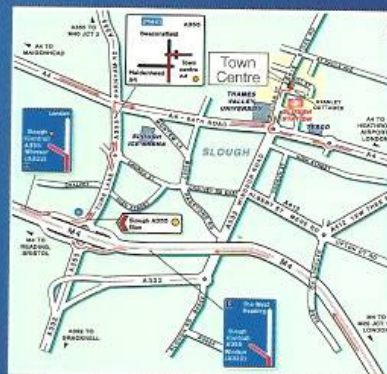
- 24 hour access
- Parking
- Meeting rooms
- High speed internet
- 24 hour CCTV monitoring
- Elevator
- Disabled access
- Located in a town centre
- Major transport links

From the M4

- Exit at Junction 6
- At the roundabout take the 3rd exit if you were heading Westbound on the M4 or the 1st exit if you were heading Eastbound
- Go straight over the roundabout and at the set of traffic lights, turn right on to Bath Road
- Continue until you reach a roundabout and take the 1st exit onto Stoke Road
- Go over the bridge and we are on the right

From the M40

- Exit at Junction 2
- Follow signs for Slough and after passing through Farnham Common
- When you reach two mini roundabouts go straight over both, keep going through various sets of traffic lights until you approach a crossroads
- Keep in the left hand lane to take the slip road onto Bath Road
- Continue and take 1st exit at roundabout onto Stoke Road
- Go over the bridge and we are on the right

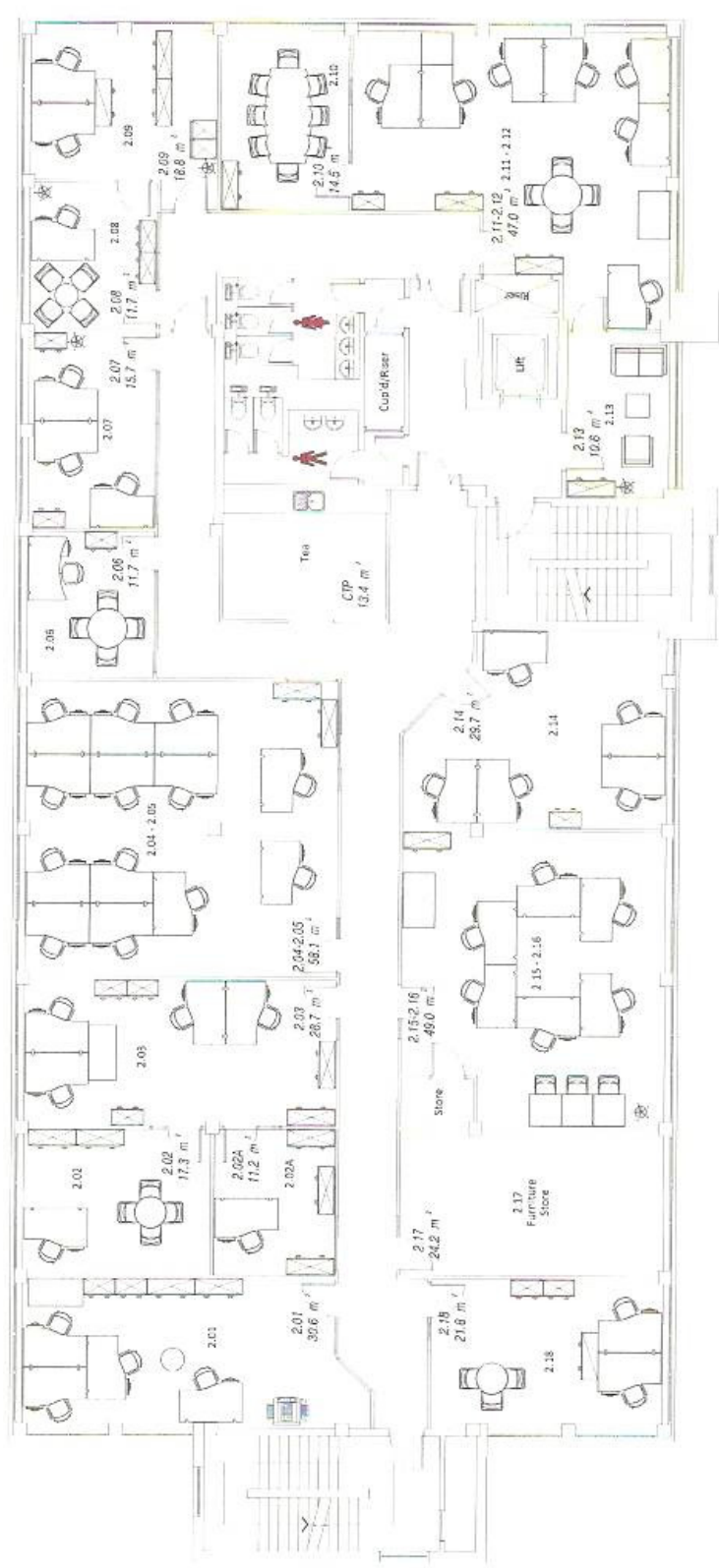


Terms

Offices are available on flexible terms from 3 months to 5 years or more.
Suites from 250 - 18697 sq ft available.

Important

These particulars do not form part of any contract. None of the directors, employees or agents are authorised to give or make any warranty or representation on behalf of any party. Whilst information and particulars are given in good faith, intending purchasers or tenants must satisfy themselves independently as to the accuracy of all matters on which they intend to rely. All negotiations are subject to contract.



Second Floor Plan

<p>100% Scale</p> <p>This drawing is for reference only and should not be used for construction purposes.</p> <p>© 2011 Kier Construction Ltd. All rights reserved. No part of this drawing may be reproduced without the written consent of Kier Construction Ltd.</p>		<p>DRG. Name: Gr Floor</p> <p>SCALE</p> <p>DRAWN: Kerem SAHIN</p> <p>DATE: 14.02.2011</p> <p>DRG. NO.: 1603-01-Gr</p> <p>Rev.: A</p>
<p>100% Scale</p> <p>This drawing is for reference only and should not be used for construction purposes.</p> <p>© 2011 Kier Construction Ltd. All rights reserved. No part of this drawing may be reproduced without the written consent of Kier Construction Ltd.</p>		<p>CENTRE NO: 1603</p> <p>CENTRE LOCATION: Slough Town Centre</p> <p>18 Stoke Road</p> <p>Slough</p> <p>51.2.5AG</p>
<p>100% Scale</p> <p>This drawing is for reference only and should not be used for construction purposes.</p> <p>© 2011 Kier Construction Ltd. All rights reserved. No part of this drawing may be reproduced without the written consent of Kier Construction Ltd.</p>		<p>100% Scale</p> <p>This drawing is for reference only and should not be used for construction purposes.</p> <p>© 2011 Kier Construction Ltd. All rights reserved. No part of this drawing may be reproduced without the written consent of Kier Construction Ltd.</p>